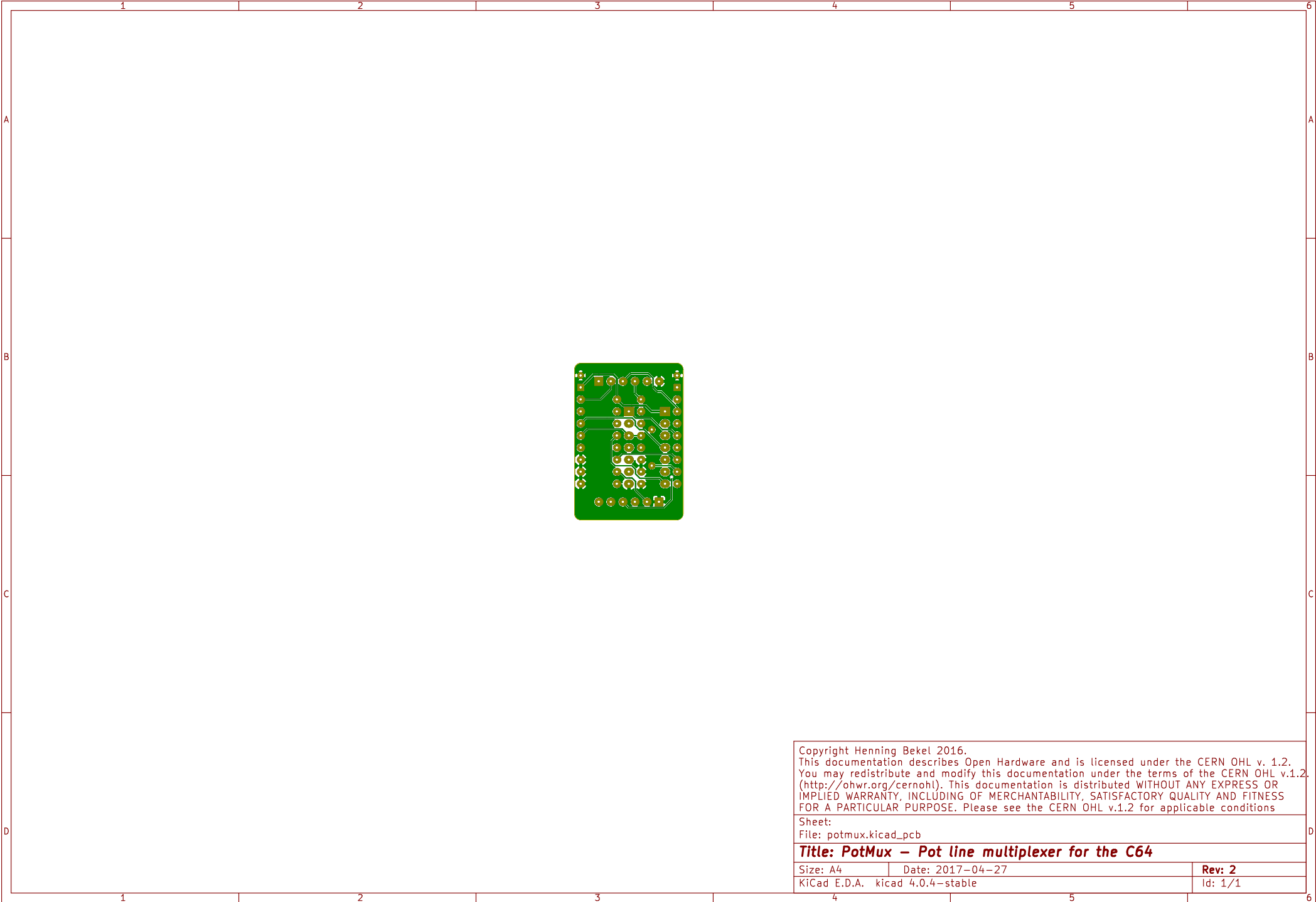
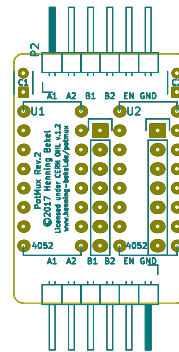


Copyright Henning Bekel 2016. This documentation describes Open Hardware and is licensed under the CERN OHL v. 1.2. You may redistribute and modify this documentation under the terms of the CERN OHL v.1.2. (http://ohwr.org/cernohl). This documentation is distributed WITHOUT ANY EXPRESS OR IMPLIED WARRANTY, INCLUDING OF MERCHANTABILITY, SATISFACTORY QUALITY AND FITNESS FOR A PARTICULAR PURPOSE. Please see the CERN OHL v.1.2 for applicable conditions		
Sheet: File: potmux.kicad_pcb		
Title: PotMux – Pot line multiplexer for the C64		
Size: A4	Date: 2017-04-27	Rev: 2
KiCad E.D.A. kicad 4.0.4-stable		Id: 1/1



Copyright Henning Bekel 2016. This documentation describes Open Hardware and is licensed under the CERN OHL v. 1.2. You may redistribute and modify this documentation under the terms of the CERN OHL v.1.2. (http://ohwr.org/cernohl). This documentation is distributed WITHOUT ANY EXPRESS OR IMPLIED WARRANTY, INCLUDING OF MERCHANTABILITY, SATISFACTORY QUALITY AND FITNESS FOR A PARTICULAR PURPOSE. Please see the CERN OHL v.1.2 for applicable conditions		
Sheet: File: potmux.kicad_pcb		
Title: PotMux – Pot line multiplexer for the C64		
Size: A4	Date: 2017-04-27	Rev: 2
KiCad E.D.A. kicad 4.0.4-stable		Id: 1/1



Copyright Henning Bekel 2016. This documentation describes Open Hardware and is licensed under the CERN OHL v. 1.2. You may redistribute and modify this documentation under the terms of the CERN OHL v.1.2. (http://ohwr.org/cernohl). This documentation is distributed WITHOUT ANY EXPRESS OR IMPLIED WARRANTY, INCLUDING OF MERCHANTABILITY, SATISFACTORY QUALITY AND FITNESS FOR A PARTICULAR PURPOSE. Please see the CERN OHL v.1.2 for applicable conditions		
Sheet: File: potmux.kicad_pcb		
Title: PotMux – Pot line multiplexer for the C64		
Size: A4	Date: 2017-04-27	Rev: 2
KiCad E.D.A. kicad 4.0.4-stable		Id: 1/1